

EIGHT PIECES FOR PIANO SOLO  
(CHOPIN STUDIES)

SPENCER HUFFMAN

1985

## CONTENTS

<i>TITLE</i>	<i>PAGE</i>
<i>Polonaise.....</i>	<i>1</i>
<i>Impromptu.....</i>	<i>13</i>
<i>Mazurka #1.....</i>	<i>21</i>
<i>Mazurka #2.....</i>	<i>25</i>
<i>Mazurka #3.....</i>	<i>29</i>
<i>Waltz.....</i>	<i>37</i>
<i>Nocturne #1.....</i>	<i>45</i>
<i>Nocturne #2.....</i>	<i>51</i>

### *Note:*

*The eight Chopin Studies of Spencer Huffman, one of his later sets of compositions, were composed in 1985. They were written as a tribute to the beauty of Chopin's piano writing, and also to serve as examples for composition students of harmonic and stylistic devices similar to those used by Chopin.*

POLONAISE

WSH



Andante Maestoso

Polonaise WSH

Handwritten musical score for Polonaise WSH, Andante Maestoso. The score is written on six systems of grand staff notation (treble and bass clefs). It includes various musical notations such as notes, rests, slurs, and dynamic markings like 'f' and 'ped'. The key signature has one sharp (F#) and the time signature is 3/4. The notation is dense and expressive, with many slurs and accents.



5

Handwritten musical score for a piece in 4/4 time. The score is written on ten staves, alternating between treble and bass clefs. The music is characterized by complex rhythmic patterns, including many eighth and sixteenth notes, and frequent use of accidentals (sharps, flats, and naturals). The notation includes various articulations such as slurs, accents, and dynamic markings. The piece concludes with a double bar line and a large scribble on the right side of the page.

Dynamic markings and performance instructions include:

- mp* (mezzo-piano)
- cresc* (crescendo)
- poco* (poco)
- al* (allegro)
- poco* (poco)

8va-

Handwritten musical notation for the first system, featuring treble and bass staves with various notes and accidentals.

Handwritten musical notation for the second system, including annotations like "8va", "loco", and "page 9". A circled "A" is written over the bass staff.

Handwritten musical notation for the third system, including annotations like "piv lento", "mf", and "rit edim". A circled "2" is written at the beginning of the system.

Handwritten musical notation for the fourth system, showing treble and bass staves with notes and accidentals.

Handwritten musical notation for the fifth system, showing treble and bass staves with notes and accidentals.



The image displays a handwritten musical score for guitar, organized into five systems, each consisting of two staves (treble and bass clef). The notation is dense and includes various musical elements such as chords, melodic lines, and slurs. The first system shows a complex melodic line in the treble clef with many accidentals and a bass line with chords and some melodic movement. The second system features a treble clef line with a triplet of eighth notes and a bass line with a steady eighth-note accompaniment. The third system continues the melodic development in the treble clef, with a bass line that includes some chromatic movement. The fourth system shows a more rhythmic treble clef line with chords and a bass line with a consistent eighth-note pattern. The fifth system concludes with a melodic treble clef line and a bass line with chords and some melodic fragments. The handwriting is fluid and characteristic of a working draft.



Handwritten musical notation for the first system, measures 1-3. The top staff is in treble clef and the bottom staff is in bass clef. Both are in a key with one flat (B-flat). Measure 1 has a '9' below the treble staff and a sharp sign (#) above the bass staff. Measure 2 has a sharp sign (#) above the treble staff. Measure 3 has a 'poco cresc' marking above the treble staff. The notation includes various chords and melodic lines with slurs and ties.

Handwritten musical notation for the second system, measures 4-6. The top staff is in treble clef and the bottom staff is in bass clef. Both are in a key with one flat (B-flat). Measure 4 has a sharp sign (#) above the treble staff and a 'mf' marking below the bass staff. Measure 5 has a 'dimin' marking below the treble staff. Measure 6 has an 'mp' marking below the treble staff. The notation includes various chords and melodic lines with slurs and ties.

Handwritten musical notation for the third system, measures 7-9. The top staff is in treble clef and the bottom staff is in bass clef. Both are in a key with one flat (B-flat). Measure 7 has a 'p' marking below the treble staff. The notation includes various chords and melodic lines with slurs and ties.

Handwritten musical notation for the fourth system, measures 10-12. The top staff is in treble clef and the bottom staff is in bass clef. Both are in a key with one flat (B-flat). The notation includes various chords and melodic lines with slurs and ties.

Handwritten musical notation for the fifth system, measures 13-15. The top staff is in treble clef and the bottom staff is in bass clef. Both are in a key with one flat (B-flat). The notation includes various chords and melodic lines with slurs and ties.

Handwritten musical score for 10 staves. The score is written in treble and bass clefs with various musical notations including notes, rests, and accidentals. It includes performance instructions such as "legg", "poco rit", and "VS" with an arrow. There are also large scribbled-out areas on the right side of the page.



9

Handwritten musical score for the first system. It consists of two staves: a piano staff on top and a bass staff on the bottom. The piano staff begins with a treble clef and a key signature of two flats (B-flat and E-flat). The tempo marking "incalzando" is written above the first few notes. The dynamic marking "f anima" is written above the middle section. The bass staff begins with a bass clef and a key signature of two flats. The system concludes with a fermata over the final notes.

Handwritten musical score for the second system. It consists of two staves: a piano staff on top and a bass staff on the bottom. The piano staff begins with a treble clef and a key signature of two flats. The tempo marking "a tempo" is written above the middle section. The dynamic marking "mp" is written above the first few notes. The bass staff begins with a bass clef and a key signature of two flats. The system concludes with a circled marking that reads "D.S. page 1".

Handwritten musical score for the third system. It consists of two staves: a piano staff on top and a bass staff on the bottom. The piano staff begins with a treble clef and a key signature of two flats. A circled marking at the beginning reads "Coda". The tempo marking "lao" is written above the first few notes. The bass staff begins with a bass clef and a key signature of two flats. The system concludes with a fermata over the final notes.

Handwritten musical score for the fourth system. It consists of two staves: a piano staff on top and a bass staff on the bottom. The piano staff begins with a treble clef and a key signature of two flats. The bass staff begins with a bass clef and a key signature of two flats. The system concludes with a circled marking that reads "9".

Handwritten musical notation for the first system. The treble staff contains a series of chords and melodic fragments, some with accidentals like sharps and flats. The bass staff provides a harmonic accompaniment with chords and a descending line. A large slur encompasses the first four measures of the treble staff.

Handwritten musical notation for the second system. The treble staff is marked with "8va" at the beginning. It features chords and melodic lines. The bass staff includes "ped" (pedal) markings with an "x" below them. A large scribble is present on the right side of the system.

Handwritten musical notation for the third system. The treble staff has a "1000" marking above it. A large slur covers the entire treble staff. The bass staff includes a "ped" marking with an "x" below it. The notation is dense with chords and melodic lines.



Handwritten musical notation on a two-staff system. The top staff is in treble clef and the bottom staff is in bass clef. The music includes various notes, rests, and chord symbols such as '7', '6', and '8vb'. A triplet of notes is marked with a '3' above it. A dashed line with '8vb' below it indicates an octave shift. The piece concludes with a double bar line and a fermata over the final note.

A series of ten empty musical staves, each consisting of five horizontal lines, arranged vertically on the page.

*Impromptu* WSH



3 Moderato

1195

Impromptu

WSH

Handwritten musical notation for the first system, measures 1-2. The music is in treble and bass clefs with a common time signature (C). The key signature has one sharp (F#). The first measure contains a treble staff with a half note chord (F#, C#) and a bass staff with a half note chord (F, C). The second measure contains a treble staff with a half note chord (F#, C#) and a bass staff with a half note chord (F, C). Dynamics include *p* in both staves.

Handwritten musical notation for the second system, measures 3-4. The music is in treble and bass clefs with a common time signature (C). The key signature has one sharp (F#). The third measure contains a treble staff with a half note chord (F#, C#) and a bass staff with a half note chord (F, C). The fourth measure contains a treble staff with a half note chord (F#, C#) and a bass staff with a half note chord (F, C). Dynamics include *p* in the first measure and *mf* in the second measure.

Handwritten musical notation for the third system, measures 5-6. The music is in treble and bass clefs with a common time signature (C). The key signature has one sharp (F#). The fifth measure contains a treble staff with a half note chord (F#, C#) and a bass staff with a half note chord (F, C). The sixth measure contains a treble staff with a half note chord (F#, C#) and a bass staff with a half note chord (F, C). Dynamics include *p* in both staves.

Handwritten musical notation for the fourth system, measures 7-8. The music is in treble and bass clefs with a common time signature (C). The key signature has one sharp (F#). The seventh measure contains a treble staff with a half note chord (F#, C#) and a bass staff with a half note chord (F, C). The eighth measure contains a treble staff with a half note chord (F#, C#) and a bass staff with a half note chord (F, C). Dynamics include *p* in both staves.

Handwritten musical notation for the fifth system, measures 9-10. The music is in treble and bass clefs with a common time signature (C). The key signature has one sharp (F#). The ninth measure contains a treble staff with a half note chord (F#, C#) and a bass staff with a half note chord (F, C). The tenth measure contains a treble staff with a half note chord (F#, C#) and a bass staff with a half note chord (F, C). Dynamics include *mf* in the first measure and *p* in the second measure.



Handwritten musical notation for the first system, consisting of two staves with treble and bass clefs. The notation includes various notes, accidentals (sharps, flats, double flats), and slurs. The first staff has a treble clef and the second has a bass clef. The music is written in a complex, somewhat abstract style with many accidentals.

Handwritten musical notation for the second system, consisting of two staves with treble and bass clefs. The notation includes various notes, accidentals, and slurs, continuing the complex style of the first system.

Handwritten musical notation for the third system, consisting of two staves with treble and bass clefs. The notation includes various notes, accidentals, and slurs. A dynamic marking 'p' is visible in the first staff.

Handwritten musical notation for the fourth system, consisting of two staves with treble and bass clefs. The notation includes various notes, accidentals, and slurs. Dynamic markings 'mf' and 'p' are visible in the first and second staves respectively.

Handwritten musical notation for the fifth system, consisting of two staves with treble and bass clefs. The notation includes various notes, accidentals, and slurs. Dynamic markings 'p' and 'arcs' are visible in the first and second staves respectively.

Handwritten musical notation for the first system. The top staff is in treble clef and the bottom staff is in bass clef. The music consists of eighth and sixteenth notes with various accidentals. Dynamic markings include *al* (all) and *f* (forte). There are also some handwritten symbols on the right side of the system.

Handwritten musical notation for the second system. The top staff is in treble clef and the bottom staff is in bass clef. The music features quarter and eighth notes. A dynamic marking of *dimin* (diminuendo) is present. There are some handwritten symbols on the right side of the system.

Handwritten musical notation for the third system. The top staff is in treble clef and the bottom staff is in bass clef. The music consists of quarter and eighth notes. Dynamic markings include *al* and *p* (piano). There are some handwritten symbols on the right side of the system.

Handwritten musical notation for the fourth system. The top staff is in treble clef and the bottom staff is in bass clef. The music features quarter and eighth notes with some rests. Dynamic markings include *poco rit* (poco ritardando) and *poco piu lento* (poco più lento). There are some handwritten symbols on the right side of the system.

Handwritten musical notation for the fifth system. The top staff is in treble clef and the bottom staff is in bass clef. The music consists of quarter and eighth notes. A dynamic marking of *poco cresc* (poco crescendo) is present. There are some handwritten symbols on the right side of the system.

Handwritten musical notation, first system. Treble clef. Dynamics: *dimin*, *pp*, *mp*. Includes notes with sharps and accidentals.

Handwritten musical notation, second system. Treble clef. Dynamics: *cresc*. Includes notes with sharps and accidentals.

Handwritten musical notation, third system. Treble clef. Dynamics: *mf*. Includes notes with sharps and accidentals.

Handwritten musical notation, fourth system. Treble clef. Dynamics: *p*. Includes notes with sharps and accidentals.

Handwritten musical notation, fifth system. Treble clef. Includes notes with sharps and accidentals.



Handwritten musical notation for the first system. The top staff is in treble clef and the bottom staff is in bass clef. The music consists of several measures with various notes, accidentals (sharps, flats, naturals), and dynamic markings. A 'p' (piano) marking is visible in the third measure of the top staff.

Handwritten musical notation for the second system. The top staff is in treble clef and the bottom staff is in bass clef. The music continues with various notes and accidentals.

Handwritten musical notation for the third system. The top staff is in treble clef and the bottom staff is in bass clef. Dynamic markings include 'mf' (mezzo-forte) and 'dimin' (diminuendo). A triplet of notes is marked with a '3' in the first measure of the top staff.

Handwritten musical notation for the fourth system. The top staff is in treble clef and the bottom staff is in bass clef. Dynamic markings include 'incalzando' (ritardando) and 'mf anima' (mezzo-forte with animation).

Handwritten musical notation for the fifth system. The top staff is in treble clef and the bottom staff is in bass clef. Dynamic markings include 'mf' (mezzo-forte) and 'p' (piano). The system concludes with a double bar line.

*Tempo I*

Handwritten musical notation for the first system, consisting of two staves. The upper staff is in treble clef and the lower in bass clef. The music features a complex melodic line with many accidentals (sharps and naturals) and rests. The dynamic marking *p* (piano) is present in the first measure of both staves.

Handwritten musical notation for the second system, consisting of two staves. The upper staff is in treble clef and the lower in bass clef. The music continues with complex melodic lines and accidentals. Dynamic markings include *mf* (mezzo-forte) in the first measure of the upper staff and *p* in the first measure of the lower staff.

Handwritten musical notation for the third system, consisting of two staves. The upper staff is in treble clef and the lower in bass clef. This system shows a change in dynamics and includes markings for *p*, *mf*, and various accidentals.

Handwritten musical notation for the fourth system, consisting of two staves. The upper staff is in treble clef and the lower in bass clef. The music features a mix of eighth and sixteenth notes with many accidentals. A dynamic marking of *p* is visible in the first measure of the upper staff.

Handwritten musical notation for the fifth system, consisting of two staves. The upper staff is in treble clef and the lower in bass clef. The music concludes with complex melodic lines and accidentals. A dynamic marking of *p* is present in the first measure of the upper staff.



Handwritten musical notation for the first system, measures 1-3. The top staff is in treble clef and the bottom staff is in bass clef. Measure 1 has a dynamic marking of *p*. Measure 2 has a dynamic marking of *mf*. Measure 3 has a dynamic marking of *p*. The music features various accidentals and rhythmic patterns.

Handwritten musical notation for the second system, measures 4-6. The top staff is in treble clef and the bottom staff is in bass clef. Measure 4 has a dynamic marking of *p*. Measure 5 has a dynamic marking of *cresc*. Measure 6 has a dynamic marking of *al*. The music features various accidentals and rhythmic patterns.

Handwritten musical notation for the third system, measures 7-9. The top staff is in treble clef and the bottom staff is in bass clef. Measure 7 has a dynamic marking of *f*. Measure 8 has a dynamic marking of *dimin*. Measure 9 has a dynamic marking of *dimin*. The music features various accidentals and rhythmic patterns.

Handwritten musical notation for the fourth system, measures 10-12. The top staff is in treble clef and the bottom staff is in bass clef. Measure 10 has a dynamic marking of *al*. Measure 11 has a dynamic marking of *p*. Measure 12 has a dynamic marking of *poco cresc*. The music features various accidentals and rhythmic patterns.

Handwritten musical notation for the fifth system, measures 13-15. The top staff is in treble clef and the bottom staff is in bass clef. Measure 13 has a dynamic marking of *mf*. Measure 14 has a dynamic marking of *per cresc*. Measure 15 has a dynamic marking of *pp*. The music features various accidentals and rhythmic patterns.

Handwritten musical notation on ten staves. The text "TWO MAZURKAS WSH" is written across the middle staves.

TWO MAZURKAS WSH



Moderato 1635

MAZURKA #1 WSH

3

*p* (*non ped*)

*pp* *p* *f* *p*

*f* *p* *f* *dimin*

*poco a poco* *non ped*



Handwritten musical notation for the first system. The top staff is in treble clef and the bottom staff is in bass clef. The music includes a triplet of eighth notes in the first measure of the treble staff. Dynamic markings include *mf* and *dimin*. The system concludes with a double bar line.

Handwritten musical notation for the second system. The top staff is in treble clef and the bottom staff is in bass clef. The music continues with various note values and rests. Dynamic markings include *pp*. The system concludes with a double bar line.

Handwritten musical notation for the third system. The top staff is in treble clef and the bottom staff is in bass clef. It features first and second endings marked with circled numbers 1 and 2. Dynamic markings include *pp* and *mp*. The system concludes with a double bar line.

Handwritten musical notation for the fourth system. The top staff is in treble clef and the bottom staff is in bass clef. The key signature changes to D major (two sharps). Dynamic markings include *dimin*. The system concludes with a double bar line.

Handwritten musical notation for the fifth system. The top staff is in treble clef and the bottom staff is in bass clef. The key signature changes to B minor (two sharps). Dynamic markings include *pp*. The system concludes with a double bar line.



Handwritten musical notation for the first system, consisting of two staves. The top staff has a treble clef and the bottom staff has a bass clef. Dynamics include *p*, *f*, and *p*. There are various notes, rests, and slurs.

Handwritten musical notation for the second system, consisting of two staves. The top staff has a treble clef and the bottom staff has a bass clef. The text "dim poco a poco" is written under the top staff. Dynamics include *p*.

Handwritten musical notation for the third system, consisting of two staves. The top staff has a treble clef and the bottom staff has a bass clef. Dynamics include *mf* and *diminu*. There are slurs and a circled "2".

Handwritten musical notation for the fourth system, consisting of two staves. The top staff has a treble clef and the bottom staff has a bass clef. Dynamics include *pp*. The text "poco rit" is written under the top staff.

Handwritten musical notation for the fifth system, consisting of two staves. The top staff has a treble clef and the bottom staff has a bass clef. Dynamics include *pp*. The system ends with a double bar line.



♩ Allegro 0000

♯5

MAZURKA #2

WSH

Handwritten musical notation for the first system of a Mazurka. It consists of two staves. The top staff is in treble clef with a 3/4 time signature. The bottom staff is in bass clef. The music features a key signature of one sharp (F#) and includes dynamic markings such as 'p' (piano) and 'cresc' (crescendo). There are also some handwritten annotations like '1' and '3' above notes.

Handwritten musical notation for the second system of a Mazurka. It consists of two staves. The top staff is in treble clef and the bottom staff is in bass clef. The music features a key signature of one sharp (F#) and includes dynamic markings such as 'mp leggiero' (mezzo-piano, light), 'dimin' (diminuendo), 'al' (ad libitum), and 'pp' (pianissimo). A circled '2' is written above the final measure of the top staff.

Handwritten musical notation for the third system of a Mazurka. It consists of two staves. The top staff is in treble clef and the bottom staff is in bass clef. The music features a key signature of one sharp (F#) and includes dynamic markings such as 'p' (piano) and 'cresc' (crescendo). There are also some handwritten annotations like 'al' and 'b' (flat) below notes.

Handwritten musical notation for the fourth system of a Mazurka. It consists of two staves. The top staff is in treble clef and the bottom staff is in bass clef. The music features a key signature of one sharp (F#) and includes dynamic markings such as 'mf' (mezzo-forte), 'mp' (mezzo-piano), and 'dimin...' (diminuendo). There are also some handwritten annotations like 'b' (flat) below notes.

Handwritten musical notation for the fifth system of a Mazurka. It consists of two staves. The top staff is in treble clef and the bottom staff is in bass clef. The music features a key signature of one sharp (F#) and includes dynamic markings such as 'p' (piano), 'cresc' (crescendo), 'mf' (mezzo-forte), and 'mp legg' (mezzo-piano, light). There are also some handwritten annotations like '3' above notes.

Handwritten musical notation for the first system, consisting of two staves. The top staff has a treble clef and the bottom staff has a bass clef. The music includes various notes, rests, and dynamic markings like 'pp' and 'p'. There are circled numbers 1 and 2 above the top staff.

Handwritten musical notation for the second system, consisting of two staves. The top staff has a treble clef and the bottom staff has a bass clef. The music includes various notes, rests, and dynamic markings like 'p'.

Handwritten musical notation for the third system, consisting of two staves. The top staff has a treble clef and the bottom staff has a bass clef. The music includes various notes, rests, and dynamic markings like 'p', 'rit.', and 'p at apo'.

Handwritten musical notation for the fourth system, consisting of two staves. The top staff has a treble clef and the bottom staff has a bass clef. The music includes various notes, rests, and dynamic markings like 'cresc', 'mf', and 'mp'.

Handwritten musical notation for the fifth system, consisting of two staves. The top staff has a treble clef and the bottom staff has a bass clef. The music includes various notes, rests, and dynamic markings like 'dim', 'pp', and 'p'.

Handwritten musical notation on a grand staff. The top staff is in treble clef and the bottom staff is in bass clef. The lyrics "dun erit" are written below the first two measures of the top staff. The notation includes various note values, rests, and a fermata. A "ped" marking is present below the bottom staff, with a line extending to the right. The piece concludes with a double bar line and a final chord in the top staff.

MAZURKA #3  
WSH



A poco lento

0340

MAZURKA #3

WSH

Handwritten musical score for Mazurka #3, featuring piano and bass staves with various musical notations and dynamics. The score is written in 3/4 time and includes dynamic markings such as *pp*, *mf*, *mp*, and *pp a tempo*. The piece is marked *A poco lento* and includes a *poco rit* section. The notation includes treble and bass clefs, key signatures (one sharp and one flat), and various rhythmic values and articulations.



Handwritten musical notation for the first system, consisting of two staves. The upper staff is in treble clef and the lower in bass clef. The music features various notes, rests, and accidentals. A dynamic marking of *pp* is present in the lower staff.

Handwritten musical notation for the second system, consisting of two staves. The upper staff is in treble clef and the lower in bass clef. The music continues with various notes and rests. Dynamic markings include *pp* in the lower staff and *cresc poco a* in the upper staff.

Handwritten musical notation for the third system, consisting of two staves. The upper staff is in treble clef and the lower in bass clef. The music continues with various notes and rests. Dynamic markings include *poco* in the lower staff and *sempre cresc* in the upper staff.

Handwritten musical notation for the fourth system, consisting of two staves. The upper staff is in treble clef and the lower in bass clef. The music continues with various notes and rests. Dynamic markings include *f* in the upper staff and *Dimin* in the lower staff.

Handwritten musical notation for the fifth system, consisting of two staves. The upper staff is in treble clef and the lower in bass clef. The music continues with various notes and rests. Dynamic markings include *al* in the upper staff and *pp* in the lower staff.



Handwritten musical notation for the first system. The top staff is in treble clef and contains a complex melodic line with many beamed notes and slurs. The bottom staff is in bass clef and contains a supporting bass line with chords and single notes. The key signature has one sharp (F#).

Handwritten musical notation for the second system. The top staff continues the melodic line with various intervals and slurs. The bottom staff provides harmonic support with chords and moving bass lines. The key signature changes to one flat (Bb).

Handwritten musical notation for the third system. The top staff features a melodic line with some slurs. The bottom staff includes performance markings: "rit." (ritardando) and "pp) poco piu lento" (pianissimo, a little slower). The key signature has one flat (Bb).

Handwritten musical notation for the fourth system. The top staff continues the melodic development. The bottom staff shows harmonic progression with chords and bass lines. The key signature has one flat (Bb).

Handwritten musical notation for the fifth system. The top staff concludes the melodic line. The bottom staff provides the final harmonic support. The key signature has one flat (Bb).

Handwritten musical notation for the first system, consisting of four staves. The notation includes various notes, rests, and dynamic markings such as *mf* and *p*.

Handwritten musical notation for the second system, consisting of two staves. It includes dynamic markings *poco rit*, *cresc*, and *ae*.

Handwritten musical notation for the third system, consisting of two staves. It includes dynamic markings *mf*, *mp*, and *incalzando*.

Handwritten musical notation for the fourth system, consisting of two staves. It includes dynamic markings *mf*, *molto rit*, and *leggero*.

Handwritten musical notation for the first system. The treble staff contains a melodic line with a slur over the first two measures and a '6' above it. The bass staff has a complex chordal accompaniment with a '6' below the first measure. The system concludes with a double bar line and a wavy scribble on the right.

Handwritten musical notation for the second system. The treble staff features a melodic line with a slur and a '6' above it. The bass staff has a complex chordal accompaniment with a '6' below the first measure. The system concludes with a double bar line and a wavy scribble on the right.

Handwritten musical notation for the third system. The treble staff contains a melodic line with a slur and a '6' above it. The bass staff has a complex chordal accompaniment with a '6' below the first measure. The system concludes with a double bar line and a wavy scribble on the right.

Handwritten musical notation for the fourth system. The treble staff contains a melodic line with a slur and a '6' above it. The bass staff has a complex chordal accompaniment with a '6' below the first measure. The system concludes with a double bar line and a wavy scribble on the right. The instruction *pp sereno* is written in the left margin.

Handwritten musical notation for the fifth system. The treble staff contains a melodic line with a slur and a '6' above it. The bass staff has a complex chordal accompaniment with a '6' below the first measure. The system concludes with a double bar line and a wavy scribble on the right. The instruction *pp legg 2* is written in the left margin.

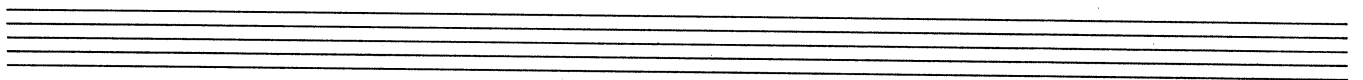
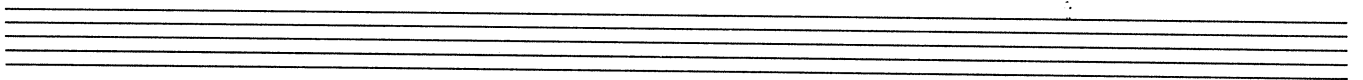
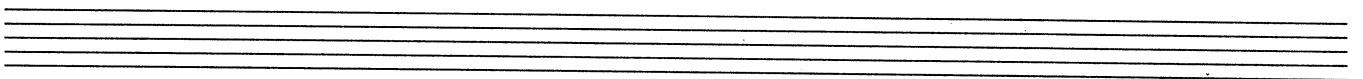
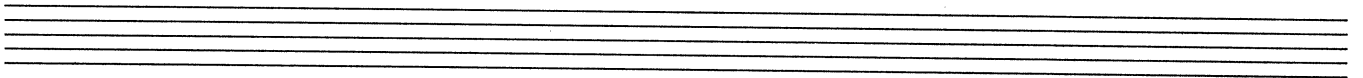
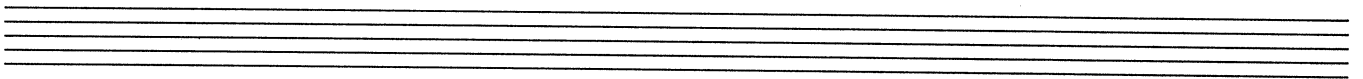
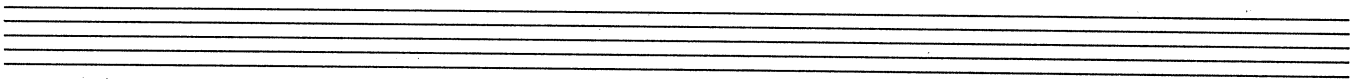
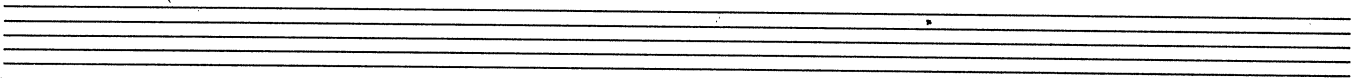
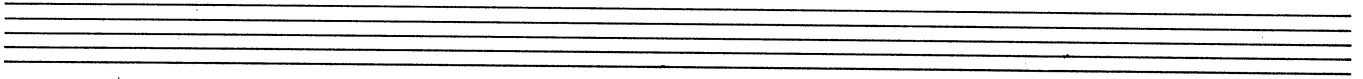
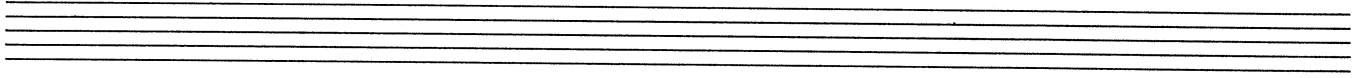
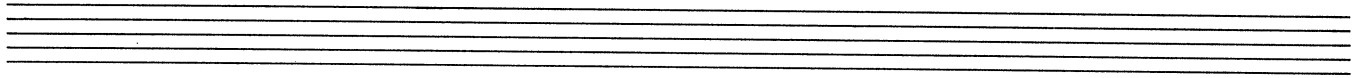
Handwritten musical notation for the first system. The top staff is in treble clef with a key signature of one sharp (F#) and a time signature of 3/4. It features a complex melodic line with many accidentals and slurs. The bottom staff is in bass clef with a key signature of one sharp (F#) and a time signature of 3/4, containing a bass line with some rests and notes. There are some scribbles on the right side of the page.

Handwritten musical notation for the second system. The top staff continues the melodic line from the first system. The bottom staff has a bass line. The instruction "cresc e stringendo" is written across the staves. There are scribbles on the right side of the page.

Handwritten musical notation for the third system. The top staff has a melodic line with the instruction "f. (anima) loco" above it. The bottom staff has a bass line with the instruction "dimin e stentando" below it. There are scribbles on the right side of the page.

Handwritten musical notation for the fourth system. The top staff starts with the instruction "a tempo" and has a melodic line. The bottom staff has a bass line. The instruction "p" is written below the first measure. The instruction "sost pp" is written below the last measure. There are scribbles on the right side of the page.





Waltz WSH



31 Moderato

1000

WALTZ

WSH

6 *p*

*mf* *dimin*

*al* *p* *cresc.*

*al* *mf*

*dimin* *p*



Handwritten musical notation for the first system, consisting of two staves. The top staff has a treble clef and the bottom a bass clef. It contains five measures of music with various notes, rests, and dynamic markings like 'mf' and 'p'.

Handwritten musical notation for the second system, consisting of two staves. It continues the piece with five measures, including dynamic markings 'p' and 'mf'.

Handwritten musical notation for the third system, consisting of two staves. It contains five measures of music with dynamic markings 'mf' and 'p'.

Handwritten musical notation for the fourth system, consisting of two staves. It contains five measures of music with dynamic markings 'p' and 'mf'.

Handwritten musical notation for the fifth system, consisting of two staves. It contains five measures of music with dynamic markings 'p', 'cresc mf', and 'al'.

Handwritten musical notation for the first system, measures 1-4. The top staff is in treble clef with a key signature of two sharps (F# and C#). The bottom staff is in bass clef. Measure 1 has a dynamic marking of *mf*. Measure 2 has a dynamic marking of *f*. Measure 3 has a dynamic marking of *dim*. A large lightning bolt symbol is drawn at the end of the system.

Handwritten musical notation for the second system, measures 5-8. The top staff is in treble clef with a key signature of two sharps. The bottom staff is in bass clef. Measure 5 has a dynamic marking of *p*. Measure 6 has a dynamic marking of *p*. Measure 7 has a dynamic marking of *mf*. Measure 8 has a dynamic marking of *mf*. The word *rit.* is written above the first measure of this system.

Handwritten musical notation for the third system, measures 9-12. The top staff is in treble clef with a key signature of two sharps. The bottom staff is in bass clef. Measure 9 has a dynamic marking of *mf*. Measure 10 has a dynamic marking of *mf*. Measure 11 has a dynamic marking of *mf*. Measure 12 has a dynamic marking of *mf*.

Handwritten musical notation for the fourth system, measures 13-16. The top staff is in treble clef with a key signature of two sharps. The bottom staff is in bass clef. Measure 13 has a dynamic marking of *dim*. Measure 14 has a dynamic marking of *al*. Measure 15 has a dynamic marking of *p*. Measure 16 has a dynamic marking of *cresc*.

Handwritten musical notation for the fifth system, measures 17-20. The top staff is in treble clef with a key signature of two sharps. The bottom staff is in bass clef. Measure 17 has a dynamic marking of *al*. Measure 18 has a dynamic marking of *mf*. Measure 19 has a dynamic marking of *mf*. Measure 20 has a dynamic marking of *mf*.

Handwritten musical notation on two staves. The top staff contains a melodic line with notes and rests, marked with a dynamic of *mf*. The bottom staff contains a bass line with notes and rests, marked with a dynamic of *mf*. A *dimin* marking is present in the second measure of the top staff.

Handwritten musical notation on two staves. The top staff contains a melodic line with notes and rests, marked with a dynamic of *mf*. The bottom staff contains a bass line with notes and rests, marked with a dynamic of *p*. A *cresc* marking is present in the second measure of the top staff.

Handwritten musical notation on two staves. The top staff contains a melodic line with notes and rests, marked with a dynamic of *mf*. The bottom staff contains a bass line with notes and rests, marked with a dynamic of *f*. A *pp* marking is present in the second measure of the top staff.

Handwritten musical notation on two staves. The top staff contains a melodic line with notes and rests, marked with a dynamic of *f*. The bottom staff contains a bass line with notes and rests, marked with a dynamic of *pp*. A *f* marking is present in the second measure of the top staff.

Handwritten musical notation on two staves. The top staff contains a melodic line with notes and rests, marked with a dynamic of *mf*. The bottom staff contains a bass line with notes and rests, marked with a dynamic of *p*. A *mf* marking is present in the second measure of the top staff.



Handwritten musical notation for the first system. The treble staff contains a melodic line with notes and rests, marked with a sharp sign. The bass staff contains a bass line with notes and rests. Dynamic markings include "cresc" (crescendo) and "mf" (mezzo-forte). The system concludes with a double bar line and a flourish.

Handwritten musical notation for the second system. The treble staff features a melodic line with notes and rests, marked with a sharp sign. The bass staff contains a bass line with notes and rests. A dynamic marking of "dimin" (diminuendo) is present. The system ends with a double bar line and a flourish.

Handwritten musical notation for the third system. The treble staff contains a melodic line with notes and rests, marked with a sharp sign. The bass staff contains a bass line with notes and rests. Dynamic markings include "rit" (ritardando) and "a tempo". The system concludes with a double bar line and a flourish.

Handwritten musical notation for the fourth system. The treble staff contains a melodic line with notes and rests. The bass staff contains a bass line with notes and rests. The system concludes with a double bar line and a flourish.

Handwritten musical notation for the fifth system. The treble staff contains a melodic line with notes and rests. The bass staff contains a bass line with notes and rests. Dynamic markings include "mf" (mezzo-forte) and "dimin" (diminuendo). The system concludes with a double bar line and a flourish.

Handwritten musical notation for the first system, consisting of a treble and bass staff. The treble staff contains a melodic line with slurs and dynamic markings *al*, *p*, and *orosc*. The bass staff contains a bass line with slurs and dynamic markings *p* and *orosc*. A large scribble is present on the right side of the system.

Handwritten musical notation for the second system, consisting of a treble and bass staff. The treble staff contains a melodic line with slurs and dynamic markings *al* and *mf*. The bass staff contains a bass line with slurs and dynamic markings *mf*. A large scribble is present on the right side of the system.

Handwritten musical notation for the third system, consisting of a treble and bass staff. The treble staff contains a melodic line with slurs and dynamic markings *dimin*, *mf*, and *orosc*. The bass staff contains a bass line with slurs and dynamic markings *mf* and *orosc*. A large scribble is present on the right side of the system.

Handwritten musical notation for the fourth system, consisting of a treble and bass staff. The treble staff contains a melodic line with slurs and dynamic markings *f* and *dimin*. The bass staff contains a bass line with slurs and dynamic markings *f* and *dimin*. A large scribble is present on the right side of the system.

Handwritten musical notation for the fifth system, consisting of a treble and bass staff. The treble staff contains a melodic line with slurs and dynamic markings *p* and *dimin*. The bass staff contains a bass line with slurs and dynamic markings *p* and *dimin*. A large scribble is present on the right side of the system.



43

Handwritten musical notation on a grand staff. The notation includes a treble clef on the upper staff and a bass clef on the lower staff. The music begins with a dynamic marking of *pp* (pianissimo) and a sharp sign (#). The notation features various note values, including quarter and eighth notes, and rests. There are several instances of double bar lines with wavy lines, possibly indicating a section break or a specific performance instruction. The piece concludes with a double bar line and a fermata-like flourish.

A series of ten empty musical staves, each consisting of five horizontal lines, arranged vertically on the page.

Nocturne #1 WSH



Adagietto

1425

Nocturne #1

WSH

Handwritten musical score for Nocturne #1, Adagietto, in 6/8 time. The score consists of seven systems of two staves each (treble and bass clef). The music is written in a key signature of one sharp (F#) and includes various musical notations such as slurs, ties, and dynamic markings like 'p' and 'legg'. The first system starts with a '1' in the left margin and a 'p' dynamic marking. The second system has a '(b)' marking above the bass staff. The third system has a '3' marking above the treble staff and 'legg' written below the bass staff. The score is handwritten and shows signs of being a working draft.





mp *dimin*

Handwritten musical notation for the first system. The treble staff contains a melodic line with notes and rests, marked with *mp* and *dimin*. The bass staff contains a bass line with notes and rests. There are several accidentals (sharps and flats) throughout the system.

*poco cresc*

*mf* *dimin*

Handwritten musical notation for the second system. The treble staff has a melodic line with notes and rests, marked with *poco cresc*. The bass staff has a bass line with notes and rests, marked with *mf* and *dimin*. There are several accidentals (sharps and flats) throughout the system.

*loco*

*p*

*mf* *cresc*

Handwritten musical notation for the third system. The treble staff has a melodic line with notes and rests, marked with *loco* and *p*. The bass staff has a bass line with notes and rests, marked with *mf* and *cresc*. There are several accidentals (sharps and flats) throughout the system.

*mf*

*cresc*

Handwritten musical notation for the fourth system. The treble staff has a melodic line with notes and rests, marked with *mf*. The bass staff has a bass line with notes and rests, marked with *cresc*. There are several accidentals (sharps and flats) throughout the system.

*f*

*loco*

*a piacere*

Handwritten musical notation for the fifth system. The treble staff has a melodic line with notes and rests, marked with *f* and *loco*. The bass staff has a bass line with notes and rests, marked with *a piacere*. There are several accidentals (sharps and flats) throughout the system.

(ped)

Handwritten musical notation on two staves. The upper staff features a melodic line with a slur and a fermata, marked with *dimin* and *a piacere*. The lower staff contains bass notes, including a triplet of eighth notes.

Handwritten musical notation on two staves. The upper staff has a melodic line with a slur and a fermata, marked with *p*. The lower staff contains bass notes.

Handwritten musical notation on two staves. The upper staff has a melodic line with a slur and a fermata, marked with *mf* and *dimin*. The lower staff contains bass notes.

Handwritten musical notation on two staves. The upper staff has a melodic line with a slur and a fermata, marked with *loco* and *p*. The lower staff contains bass notes.

Handwritten musical notation on two staves. The upper staff has a melodic line with a slur and a fermata, marked with *p*. The lower staff contains bass notes, marked with *mf*.



Handwritten musical notation for the first system, featuring a treble and bass clef. The treble clef part includes a slur over a series of notes with a *mf* dynamic marking. A dashed line above the notes is labeled *sva*, and a *loco* marking is present. The bass clef part shows a few notes with a sharp sign.

Handwritten musical notation for the second system. The treble clef part has a slur and a *mp* dynamic marking, with the instruction *dim e rit* written below. The bass clef part shows notes with a sharp sign and a *rit* marking.

Handwritten musical notation for the third system. The treble clef part starts with a *pp* dynamic marking and includes a slur. The bass clef part features a series of notes with a slur and a *sva* marking above.

Handwritten musical notation for the fourth system. The treble clef part has a slur and a *rit* marking. The bass clef part includes a slur and a *sostenuto* marking.

Handwritten musical notation for the fifth system. The treble clef part has a *loco* marking and a *pp leggiero* dynamic marking. The bass clef part includes a *ped 5* marking and a large, stylized flourish at the end of the system.

Nocturne #2  
WSH



1820 Nocturne #2 WSH

Adagietto

Handwritten musical score for the first system. The right hand (treble clef) starts with a melodic line in 9/8 time, marked *mp*. The left hand (bass clef) provides accompaniment with chords and arpeggios, marked *mf*. A *ped* (pedal) marking is present. The system concludes with a *pp dolce* section in 12/8 time, featuring a slower, more lyrical melody in the right hand and a simple accompaniment in the left hand.

Handwritten musical score for the second system. The right hand continues the melodic development with various intervals and accidentals. The left hand accompaniment remains consistent with the first system, using arpeggiated chords.

Handwritten musical score for the third system. The right hand features a *dimin* (diminuendo) marking. The left hand accompaniment continues with arpeggiated chords.

Handwritten musical score for the fourth system. The right hand continues the melodic line with various intervals and accidentals. The left hand accompaniment remains consistent with the previous systems.

Handwritten musical score for the fifth system. The right hand includes a *dimin* marking and a *rit.* (ritardando) marking. The left hand accompaniment continues with arpeggiated chords. The system concludes with a *pp poco accelerando* section, marked *atempo*, indicating a change in tempo.

*mp stentato* *pp poco accell - -*

*incalzando* *mf anima*

*dimin e rit* *p* *sost - - - -*

*a tempo* *pp*

*mp poco incalzando* *ped*

8va

string

stentato

*f*

ped

olio

poco rit

*p* dim al rit *pp*

*pp* poco cresc e string

al

*mf* anima

dim e stentato

al

sost

a tempo

*pp* poco cresc e stringendo



Handwritten musical notation for the first system. The treble staff contains a melodic line with notes and accidentals, including a sharp sign. The bass staff contains a bass line with notes and rests. Dynamic markings include *al* and *mf anima*.

Handwritten musical notation for the second system. The treble staff continues the melodic line. The bass staff has notes and rests. Dynamic markings include *dim e stentato*, *p*, and *dim*.

Handwritten musical notation for the third system. The treble staff features notes and rests, with a *sost* marking. The bass staff has notes and rests. Dynamic markings include *pp* and *tempo I*.

Handwritten musical notation for the fourth system. The treble staff has notes and rests. The bass staff has notes and rests. Dynamic markings include *pp*.

Handwritten musical notation for the fifth system. The treble staff has notes and rests. The bass staff has notes and rests. Dynamic markings include *dim*, *pp*, and *fargo*.





